



User Guide

Version 1.01.0.2

Table of Contents

Introduction	3
Purpose	
Scope	
Terms & Definitions	
References	
Overview.....	3
content controller extension Plug-in	4
Running the Plug-in.....	4
General Tab.....	4
Root Folder Mode.....	5
Current Project Mode.....	5
Parameters Tab.....	6
Adding Parameters.....	7
Modifying Parameters.....	8
Removing Parameters.....	8
Changing Values and Formulas.....	8
Locking Parameters.....	9
Using TAGs.....	9
Using Templates.....	10
Sending to content controller.....	11

Introduction

Purpose

This document is focused on the basic usage of the Plug-in and provides basic instructions on how to prepare a **content controller extension** package to be sent to BIM Managers for further processing.

Scope

The scope of this document is restricted to the user perspective of using **content controller extension** from inside Revit® 2011 version. As it is compatible with the other versions almost all details can be applied to those other versions.

Terms & Definitions

This document implies the user knowledge of all specific BIM and Revit® terms and will not present details about these terms.

References

Autodesk® Revit® manual, which can be found at:
<http://www.autodesk.com>

Overview

Content will present the Plug-in interface, its tools, how to use Project Mode, how to use Folder Mode, Preferences, TAG system, templates and how to send a package to the **content controller** application.

*content controller extension currently works on Revit® 2010 and 2011, MEP and Structural on both 32 and 64-bit platforms

content controller extension plug-in

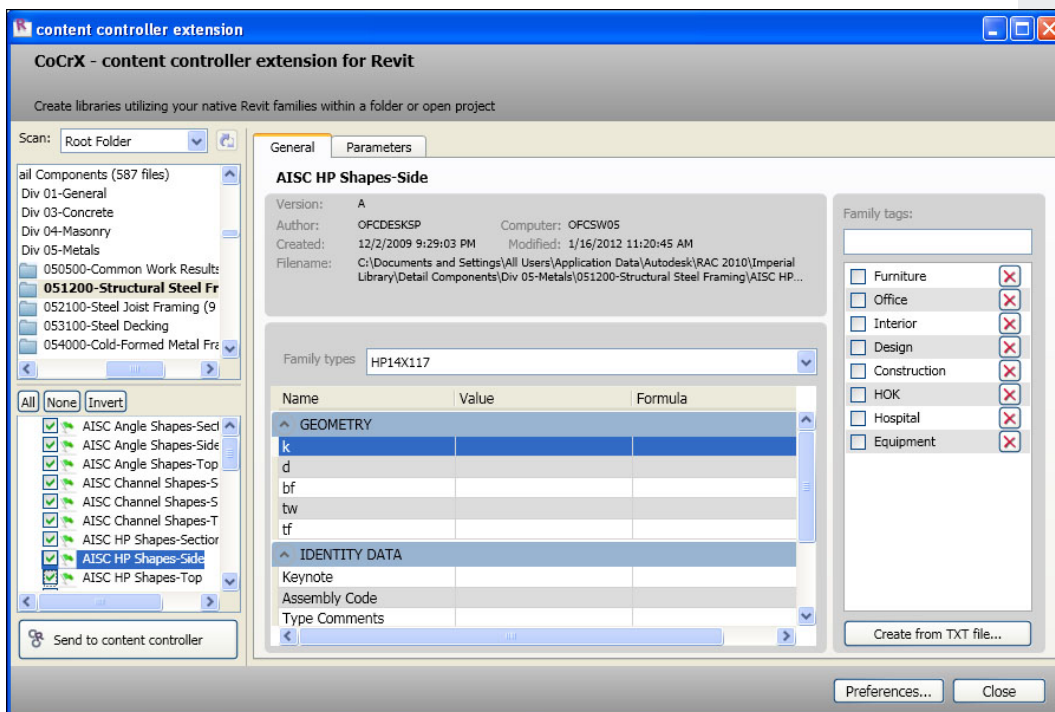
Running the Plug-in

The **content controller extension** interface is pretty simple and guides the user through the basic task of creating packages from either a current project or an existing folder. There is one command that will open the tool. As in all other Revit® Plug-ins it can be found under **"Add-Ins"** tab inside **"content controller extension"** group:



General Tab

Once you click on **"Export Families"** icon, the following Interface will be presented:

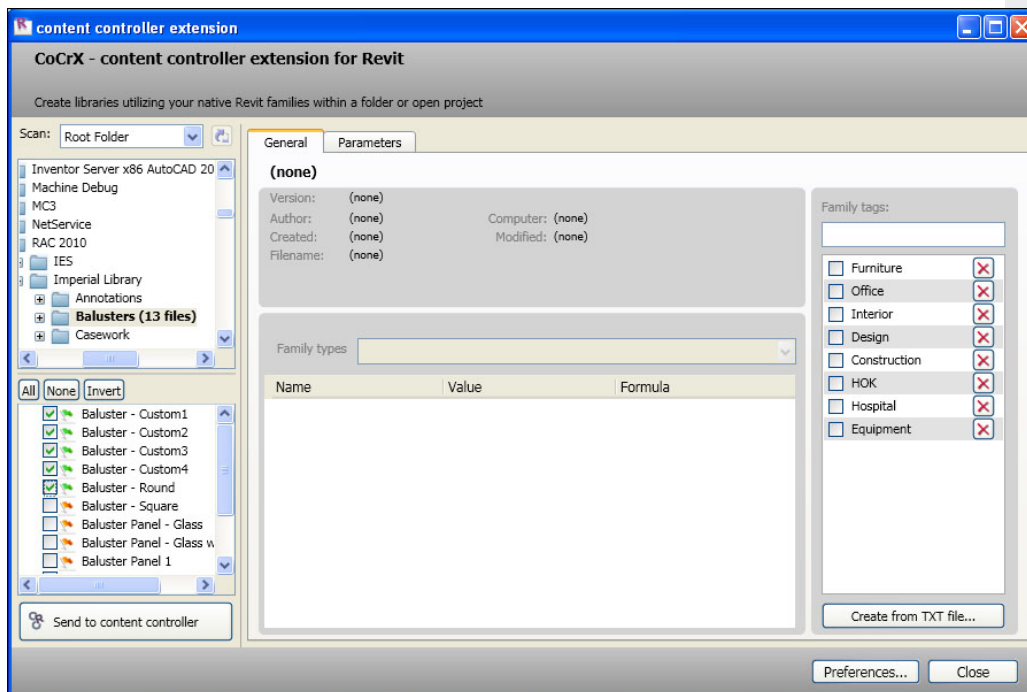


The left portion of the interface is dedicated to presenting the content source and the list of families found during the scan process. Only the families marked with a green flag will be packed. Once you select one family its data; like file information, types and parameters, are presented in the central portion of the interface through the **"General"** tab. On the right side, Family Tags can be created and associated to the families.

The Family list supports either individual or multiple selections of families. In case more than one Family is selected only common data will be displayed.

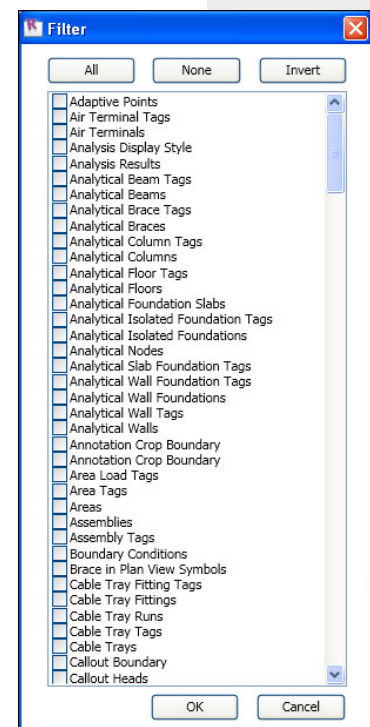
Root Folder Mode

When the user chooses **“Root folder”** mode the Plug-in scans the selected folder and its children looking for existing RFA files. This working mode is very useful when the user already has a lot of existing families in a local folder or on a network shared folder or drive.

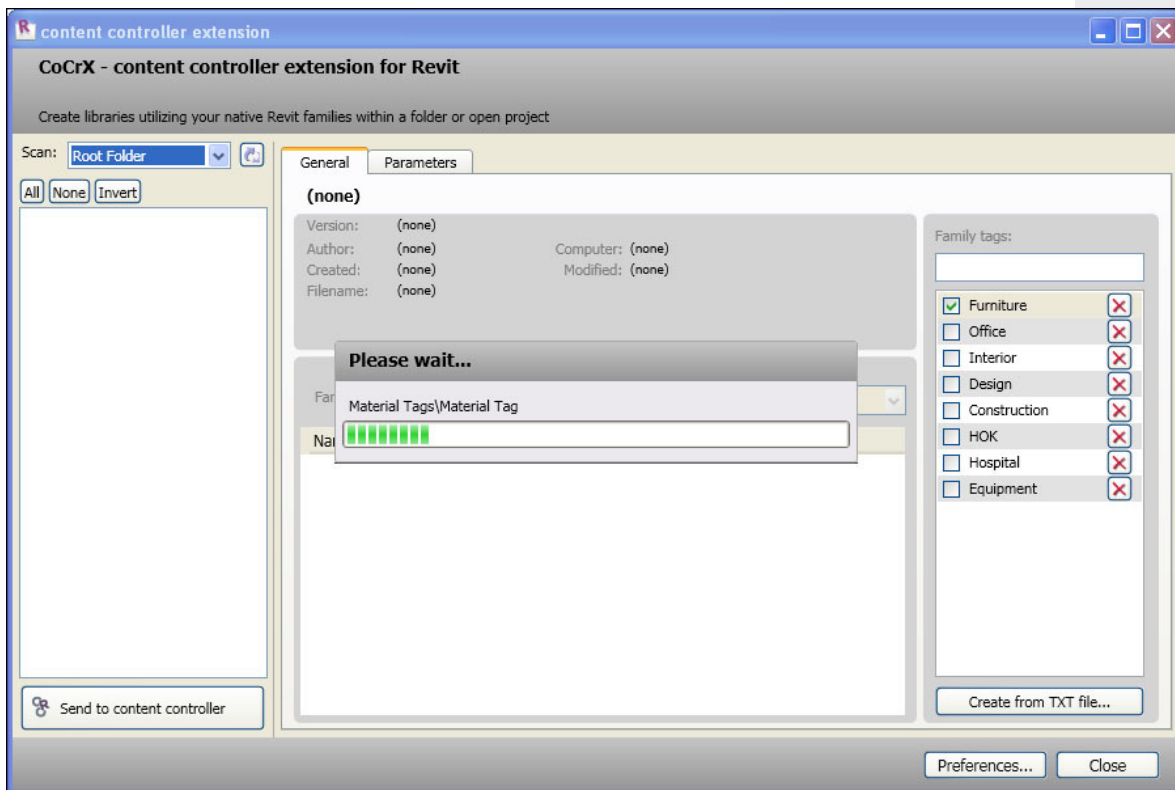


Current Project Mode

The **“Current project”** mode will perform a complete scan on the current Revit® Project being edited. First, a filter dialog will be displayed allowing the user to filter only the desired family categories:



After selecting desired categories all the families matching the filter will be extracted from the Project and one RFA file will be created per Family into the temporary working folder. This process may take a while depending on the Project size and the number of families to be processed.

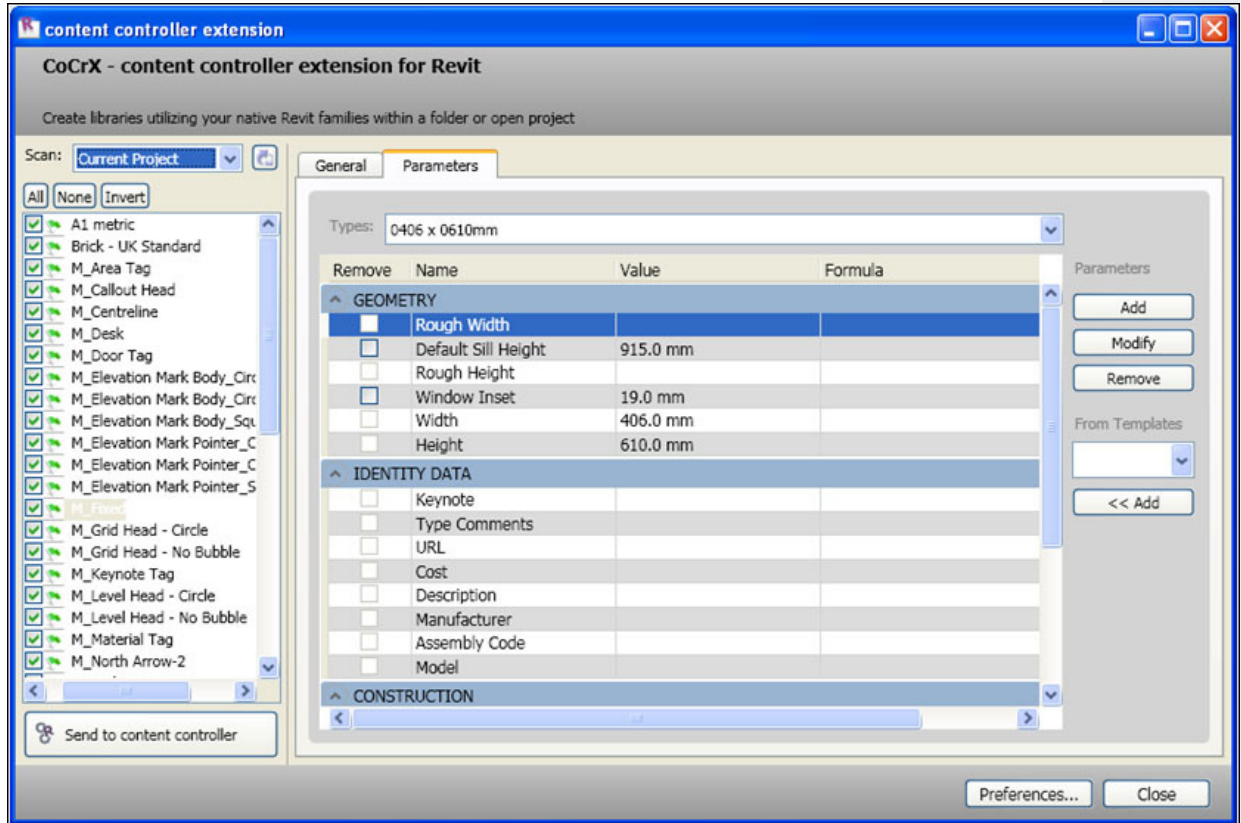


After the Project scan process is finished, all Family files extracted will be displayed on the left side allowing the user to select those they want to pack.

Parameters Tab

The **"Parameters"** tab allows users to:

- Add new parameters
- Modify existing parameters (some operations are limited by the BuiltIn parameter types)
- Change the Lock state of parameters
- Mark parameters for removal

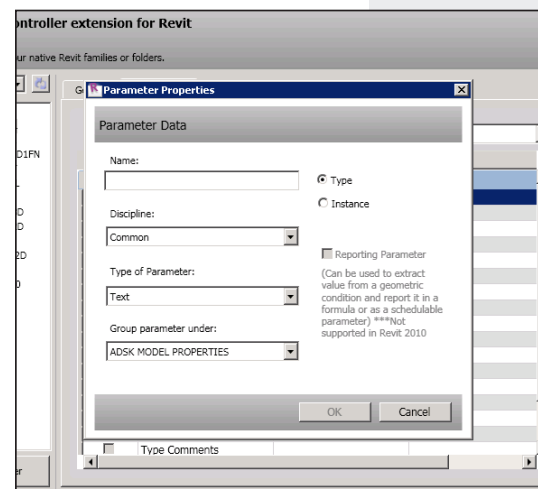


No Family files are modified on this step preventing Revit® from breaking the file compatibility when accessing RFA files from previous Revit® versions. All the modifications made in regards to parameters will be kept in the Library and will be applied, on the fly, during the insertion process inside **ofcdesk idc for Revit®**.

Adding Parameters

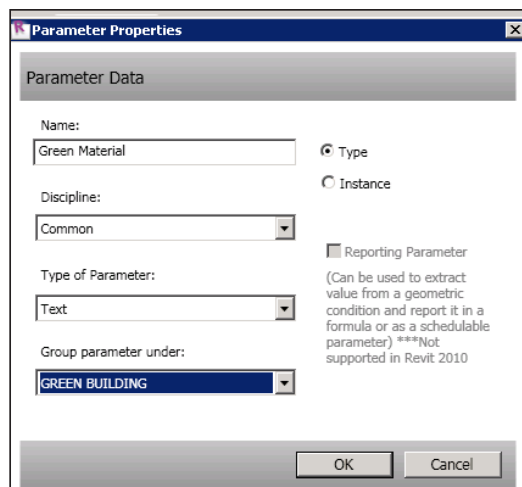
To add a new parameter to selected families click on **"Add"** button. The following dialog will be presented:

Enter desired name and select its behavior as Type or Instance, its Discipline, Type and Group. This is essentially the same interface users have access to inside the Revit® application. Click **OK** to finish the process.



Modifying Parameters

To modify a parameter, select the desired parameter on the Grid then click **“Modify”**. The following dialog will be presented:



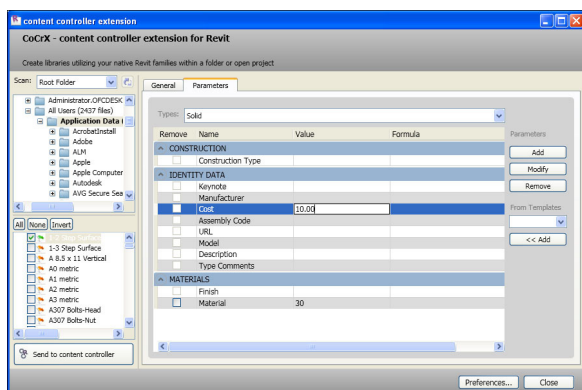
User Parameters can be fully modified, although BuiltIn parameters cannot. Currently Revit® does not support modification of BuiltIn parameters.

Removing Parameters

To remove parameters select the desired item on the Grid and click **Remove** or by checking **“Remove”** grid column. BuiltIn parameters cannot be removed so the check box is disabled. The parameters added by the user through the **content controller extension** interface can be deleted because they are not placed into RFA files yet. On the other hand, the existing parameters marked for removal will be removed on the fly during the insertion process inside **ofcdesk idc for Revit®** preventing RFA files from being modified.

Changing Values and Formulas

Values and Formulas can be edited into the grid. The user needs to click on the desired cell and the edit mode will be activated.

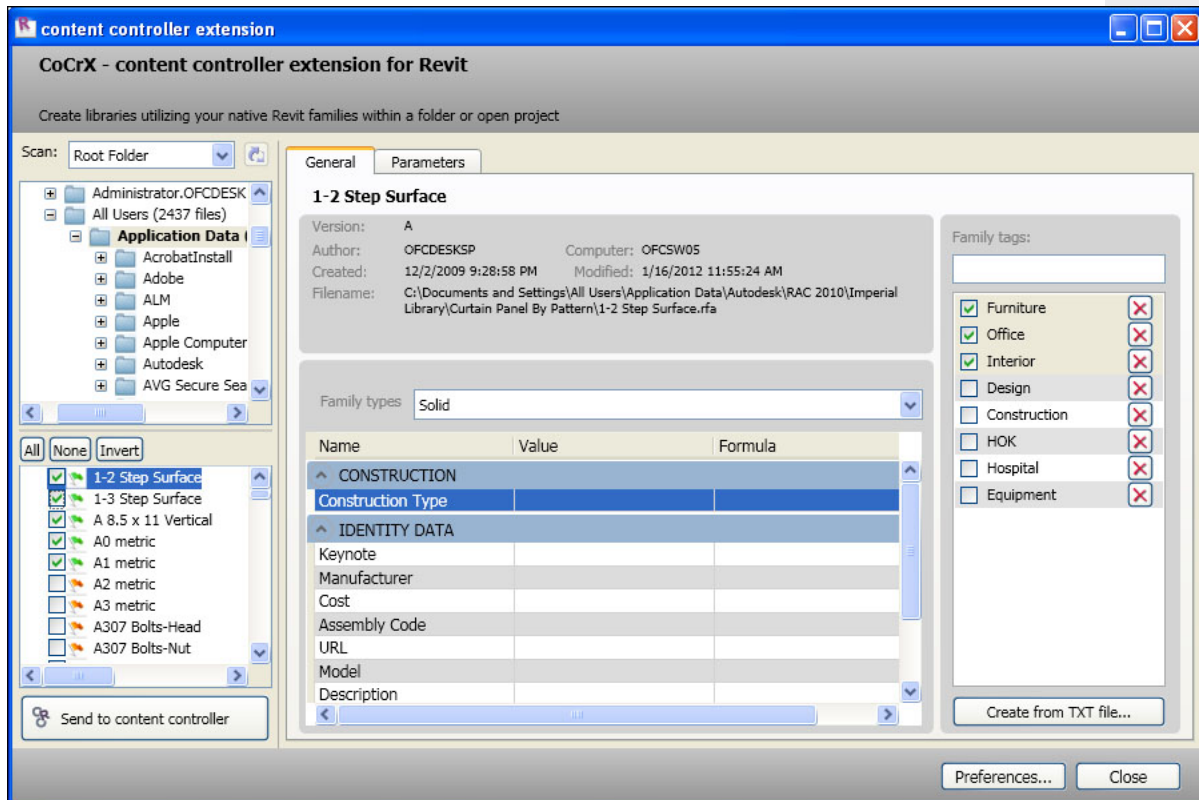


Locking Parameters

The lock mode of parameters (except BuiltIn) can be changed by checking/unchecking the **"Lock"** column on the parameters grid.

Using TAGS

Users can add tags to families to speed up the search process during insertion. The usage of tags is really vast and could be useful for representing additional metadata bound to the families that goes beyond parameters usage. To add a new tag simply type its name and hit **ENTER** key. The tag will be added to the tag dictionary and listed on the right side of the dialog. To associate a tag, select one or more families and enable the check box. To remove an existing tag, click on the red **"X"** mark.

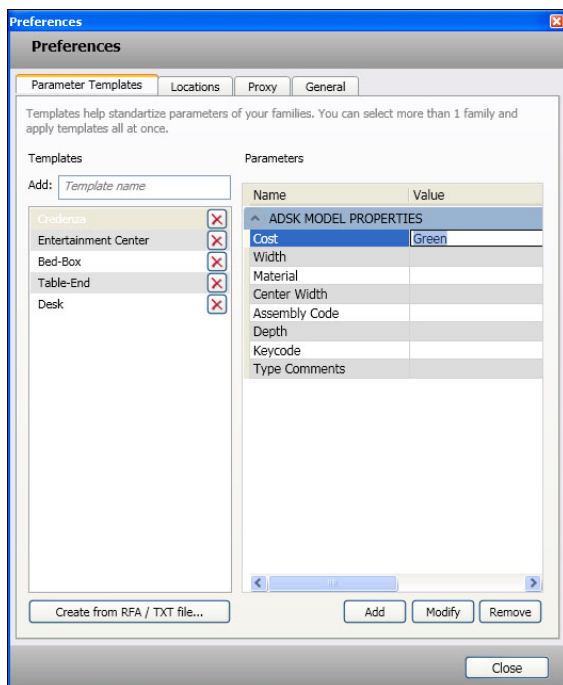


Using Templates

Users can create parameter templates to simplify the task of adding recurring parameters from time to time. The template can be a set of parameters created manually, can be created from an existing RFA family file or created from an existing Shared Parameter TXT file. Templates can be managed through the **"Preferences"** button on the **"Parameters Templates"** tab.

When adding from a Shared Parameter file the Plug-in will ask if the user wants to create one template per Group (parameters are organized by group inside the TXT file) or if user wants to create a single template with all groups.

Parameter templates can be shared across the network so users can work together with a single centralized and standard set of parameters for any purpose.



To remove templates simply click on the red **"X"** icon. To rename a template, use the in place editor by clicking on its name to start the edit mode.

The parameters can also be modified and removed from the template by clicking the specific buttons at the top.

To use a template, simply select it from the drop down box inside **"Parameters"** tab and click **"<< Add"**. All the parameters placed into the template will be created inside all selected families. You can add as many templates as you want to the same families.

Send content to content controller

content controller extension was built to provide an easy way for users to send data to the BIM Manager. After preparing a set of families, their parameters and tags, you can build the package and send it to the BIM Manager.

To send a new package, just click **"Send to content controller"**. A message will appear to confirm the number of families and the Plug-in will create the package.

Users can send as many packages as they need. Each package will be named with the user's machine name, its login name and the date/time when the package was created. This naming convention will help BIM managers to better track and organize all packages he may receive.

Contact Us

We are interested in your comments and suggestions about ofcdesk products. Please let us know how to improve features to better serve you: **feedback@ofcdesk.com**.

For further information about ofcdesk products email us: **info@ofcdesk.com**.

Technical support is available through our website, as well as learning interesting tips & tricks about ofcdesk products. Visit our website **www.ofcdesk.com**.

ofcdesk content controller extension mentioned herein is property of ofcdesk, llc, in the USA and other countries.

Revit® is a Autodesk Inc. trademark, in the USA and other countries.

ofcdesk content controller extension is not affiliated with, endorsed by, sponsored by, or supported by Autodesk Inc. and/or its affiliates or subsidiaries.

ofcdesk is not responsible for typographical or graphical errors that may appear herein.