

# Quick Start Guide OFCDesk Crayon

Learn how to use OFCDesk Crayon's features

interior design • technology • creation • customization • 3D modeling • innovation • touch of art

# Crayon

**Freedom to design with technology**

**Thank you for using OFCDesk Crayon.**

We are pleased to provide you with OFCDesk Crayon, easy-to-use, intuitive and SketchUp-based software to help you in 3D modeling. OFCDesk Crayon's tools are concise and powerful, perfect for product insertion, drawing walls, applying finishes, preparing bill of materials, and more.

This Guide walks you through the most important tools of OFCDesk Crayon, giving you the quickest way to install and begin using your license of OFCDesk Crayon. You may also obtain further information and technical support by accessing [www.ofcdesk.com](http://www.ofcdesk.com).

## Installing OFCDesk Crayon


**Important:** The crayon installation requires Google SketchUp™. You can download free SketchUp accessing <http://sketchup.google.com/download/gsu.html>.

1. At: <http://www.ofcdesk.com.br/Products/DownloadCrayon.aspx>, click on **Start Download** button (a) to start Crayon installation and, follow onscreen instructions.
2. You must be signed in to download Crayon – use **Click here** button (b) to sign in.



**Important!** You must be connected to the Internet, and must have an OFCDesk NET account to download Crayon. If you do not have an OFCDesk NET account, access <http://www.ofcdesk.com/Access/Register.aspx> Complete the form, and click on the **Send (c)** button. It's free!

## Registering OFCDesk Crayon

The registration dialog box automatically opens when Crayon is initialized. You can also access it by clicking on Registration Icon . Complete with your information and click on **Activate** (a) button.


If you do not have the Activation Code, complete the dialog box with your information and let the **Activation Code** (b) field empty. Click on **Activate** button. An e-mail will be automatically sent to OFCDesk and after process it; you will receive an Activation code via e-mail.

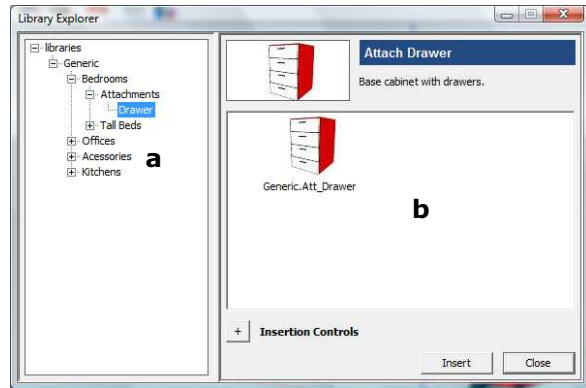
After receiving the **Activation Code**, complete all fields and click on **Activate** button.

If you want to use OFCDesk Crayon trial version, click on **Continue Trial** (c) button.

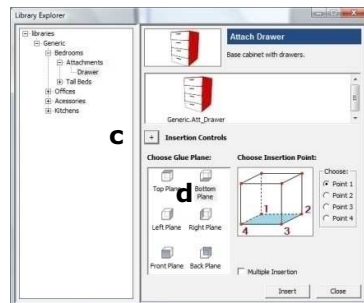
**Important:** free trial version has reduced features and limited functionality. For registering and purchasing information, visit <http://www.ofcdesk.com/crayon> or send an e-mail to [info@ofcdesk.com](mailto:info@ofcdesk.com).

# Inserting Library Products

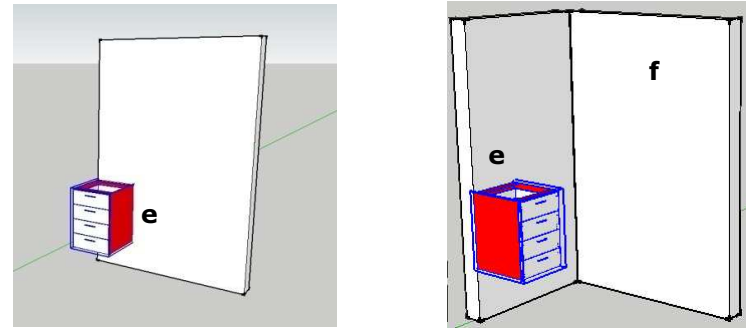
1. Within SketchUp, click on the **Library Explorer** icon. ;
2. Select an object in the tree list (a). View the product before insertion in the preview panel (b);



3. Clicking on plus signal (c), the dialog box is expanded and presents options of object attachment planes.
4. Product is preset to automatically attach with surface by object back plane. You can change the insertion point plane by clicking on plane options (d).

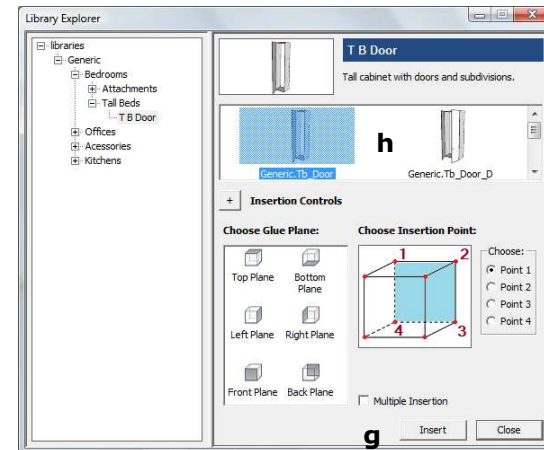


**Note:** object plane turns automatically (e) when object gets close to a surface.




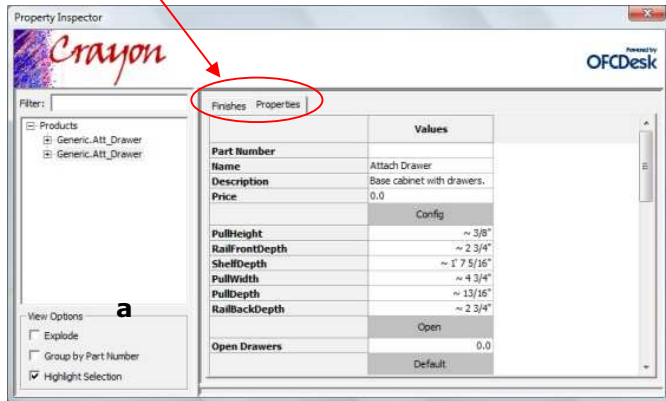
OFCDesk Crayon provides a wall drawing tool (f) (see **Drawing Walls** section). Object can be attached on the wall.

5. Click on object on **Insert button** (g) or double click on object (h), drag and drop into your drawing.



# Property Inspector

Select a Crayon object and click on the **property inspector** icon . A dialog box shows all object information and allows you to change settings using the tabs.



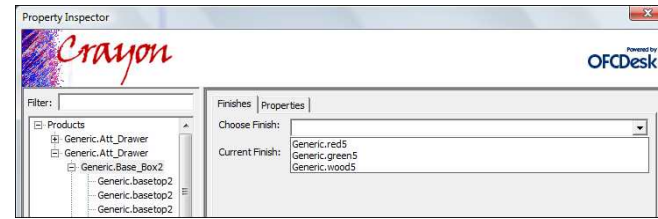
1. Toggle view options (a) and see product/part properties;
2. Double click quickly on the value (b) to freely change property values (height, width, depth).

	Config
<b>PullHeight</b>	~ 3/8"
<b>RailFrontDepth</b>	~ 2 3/4" <b>b</b>
<b>ShelfDepth</b>	~ 1' 7 5/16"
<b>PullWidth</b>	~ 4 3/4"
<b>PullDepth</b>	~ 13/16"
<b>RailBackDepth</b>	~ 2 3/4"

3. Double click slowly on the value (c) to see property setting options (height, width, depth).


	Config
<b>PullHeight</b>	~ 3/8"
<b>RailFrontDepth</b>	~ 2 3/4" <b>c</b>
<b>ShelfDepth</b>	~ 2 3/4"
<b>PullWidth</b>	3 15/16"
<b>PullDepth</b>	~ 13/16"
<b>RailBackDepth</b>	~ 2 3/4"

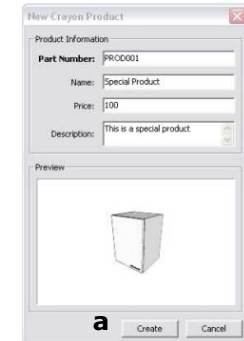
4. Select a product part and, click on the **finishes tab**. All available finishes will be shown.



# Customizing Products

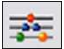
Crayon provides you the possibility to improve your library.

1. Select an object and click on the **Convert to Crayon Product Icon** ;
2. Enter data on the dialog box and click **Create** (a).




The object will be part of the model into Bill of Materials.

## Bill of Materials

Clicking on the **Bill of Materials** icon  you will get a list of materials and the price calculation.

You can organize a partial or full list (a), grouping by part number or finish (b), and also sort by products or components (c).



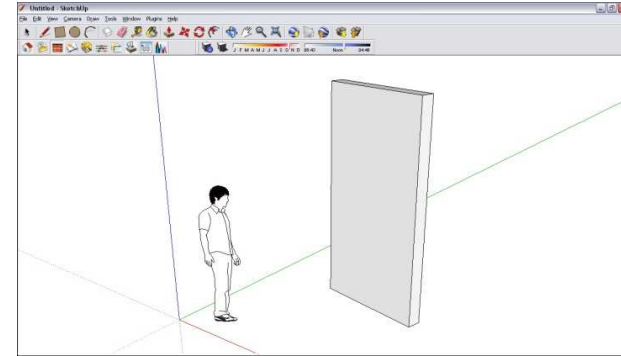
	Quant.	Name	Description	Finish	Price
Wall_Door_D	1	Wall Door D	Wall cabinet wtl -		0.0
Wall_Door_R	1	Wall Door R	Wall cabinet wtl -		0.0
Wall_Door	1	Wall Door	Wall cabinet wtl -		0.0
Wall_Door_D	1	Wall Door D	Wall cabinet wtl -		0.0
Wall_Door	1	Wall Door	Wall cabinet wtl -		0.0
Wall_Door_R	1	Wall Door R	Wall cabinet wtl -		0.0
PROD001	1	Special Product	This is a special -		100.0
<b>Totals</b>	7				100.0

OFCDesk Crayon allows you to export Bill of Materials to .txt format by clicking on the **Export** (d) button.

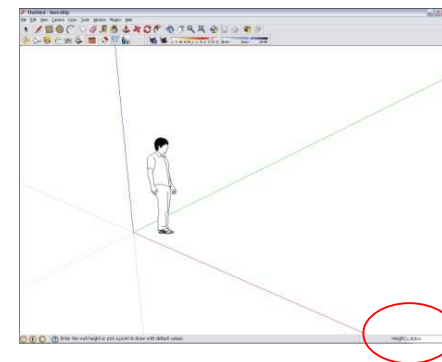
Click on the **Preview/Print** button (e) to make a copy.

## Drawing Walls

1. Click the **Draw Walls** icon .
2. Pick the start point, drag and drop at end point to draw with default values. Double click or hit **ENTER** to end drawing.



You can also customize values. Just type a wall height value and hit **ENTER**. Type a wall width value and hit **ENTER**. Type length value and hit **ENTER** twice to end construction. Values are shown on the bottom right field during process.



## System requirements

<b>Windows® XP (SP2 or higher)</b>	<b>Windows Vista® or Windows® 7 (Business or higher)</b>
<b>Software</b>	<b>Software</b>
Google SketchUp™ 7 or higher (free or Pro version); Microsoft® Internet Explorer® 7 or higher.	Google SketchUp™ 7 or higher (free or Pro version); Microsoft® Internet Explorer® 7 or higher.
<b>Minimum hardware</b>	<b>Minimum hardware</b>
600 MHz processor.	1 GHz processor.
512 MB RAM.	1 GB RAM.
300 MB of available hard-disk space. *	300 MB of available hard-disk space. *
3D class Video Card with 128 MB of memory or higher. Please ensure that the video card driver supports OpenGL version 1.5 or higher and up to date.	3D class Video Card with 256 MB of memory or higher. Please ensure that the video card driver supports OpenGL version 1.5 or higher and up to update.
3 button, scroll-wheel mouse.	3 button, scroll-wheel mouse.
* Software requires more space depending on the quantity of installed libraries. The required space stated on settings above supports the Generic OFCDesk Library installation.	



[www.ofcdesk.com](http://www.ofcdesk.com)

Images presented in this user guide may be slightly different from images on your program screen because of OFCDesk software new versions and updates. OFCDesk Crayon and the other solutions mentioned herein are properties of OFCDesk, LLC, in the USA and other countries. All other product names, logos and images belong to their holders. OFCDesk is not responsible for typographical or graphical errors that may appear herein.

© 2010. Designed by OFCDesk, LLC. All Rights Reserved.