



Tutorial

OFCDesk IDC Network Installation Guide

Version 1.1

OFCDesk, LLC

Tutorial

OFCDesk IDC Network Installation Guide

Revision History

Date	Version	Description	Author
03/JUN/2009	1.0	OFCDesk IDC Network Installation Guide	Fábio Pontes
17/JUN/2009	1.1	OFCDesk IDC Network Installation Guide	Sandra Alves

Table of Contents

Introduction.....	4
Purpose	4
Overview	5
Utilization Models.....	6
Network Installation.....	7
Setting up Systems to Network Operation.....	8

Introduction

Purpose

The OFCDesk Instructional Software team is committed to providing high-quality material to help you get the most out of our products, so we provide you with this Guide to assist you with OFCDesk IDC network installation.

The appearance and information displayed in the dialog boxes may vary according to product line.

Overview

Environment consists of three systems allowing correctly OFCDesk IDC operating:

OFCDesk IDC Server:

This system includes the database that OFCDesk IDC uses.

Database stores all library information, such as part number, description, finish rules and further more information. The database type supported by OFCDesk IDC Server is Microsoft SQL Server 2005 Express Edition.

Content Creator:

Content Creator is a system for creation and edition of product libraries and, such products can be inserted into drawings you develop using OFCDesk IDC.

OFCDesk IDC:

It is CAD itself, employed for product creation and insertion into database.

Both OFCDesk IDC and Content Creator must "see" an OFCDesk IDC Server to run, and without it, systems do not operate.

Utilization Models

Stand-alone:

When you use this model, the three systems are locally installed. Everything runs into the machine itself, including the database. Using this modality, it is not required to connect the computer to a network. The installed libraries or upgrades you may perform only will be available in this machine.

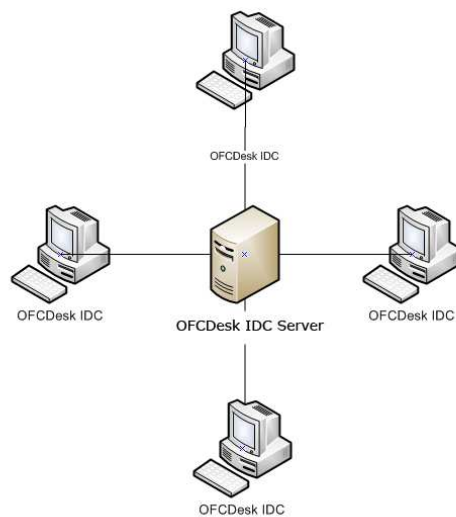
This model is recommended for a single user or, when OFCDesk IDC must run on a notebook.

Network:

This model is recommended for two or more users working with OFCDesk IDC.

Systems are installed in different machines interconnected via OFCDesk Server, so when one library is installed or an upgrade is performed in one machine, they will be automatically available to all other users. Information and DWG files are stored and shared through network.

It is recommended only one OFCDesk IDC Server for each network, but it does not matter if there is more than one.



Network Installation

There are 2 ways to install OFCDesk IDC:

Typical

For a standard OFCDesk IDC installation (see Stand-alone mode).

Advanced

It allows you to select which applications you will install, Content Creator, OFCDesk IDC and OFCDesk IDC Server (see Network mode).

It is recommended that you always use Advanced option, according to desired functionality, to set up OFCDesk IDC on network:

System installation for a single OFCDesk IDC user:

Select only OFCDesk IDC installation (uncheck others);

System installation for a single Content Creator user:

Select only Content Creator installation (uncheck others);

Data server:

Select only OFCDesk IDC Server installation (uncheck others);



Setting up Systems to Network Operation

1- Install OFCDesk IDC Server:

Select a machine accessible to other machines through network (it could be a Server or a regular machine) and install the OFCDesk IDC Server. Note down the machine name for future reference.

The machine where OFCDesk IDC has been installed must be always turned on, because it is providing data to other machines. It is recommended that this machine does not be used for other purposes.

If there is a Microsoft SQL Server 2000 Enterprise or higher installation on network, or Microsoft SQL Server 2005 Enterprise or higher, it is possible to attach the database, not requiring OFCDesk IDC Server installation. In this case, technician must know all information to access this SQL Server instance and perform this operation, information such as the sever name, user and password.

2-Set up a folder on network to include all DWG files and modules:

Now that IDC Server is already installed, choose a folder on network to store DWG files and modules. The file sharing must be through Windows and also permissions and security (for further information about sharing, access - [How to Share and Set Permissions for Folders and Files Using Windows XP](#)).

Remember that every DWG file from every installed library will be copied to this folder, so make sure there is enough space in this folder. The required space depends on which libraries will be installed.

After set up the folder, create the following directories:

- DAT Files
- Module Files

These directories will be the roots of DWG files (DAT Files) and modules (Module Files).

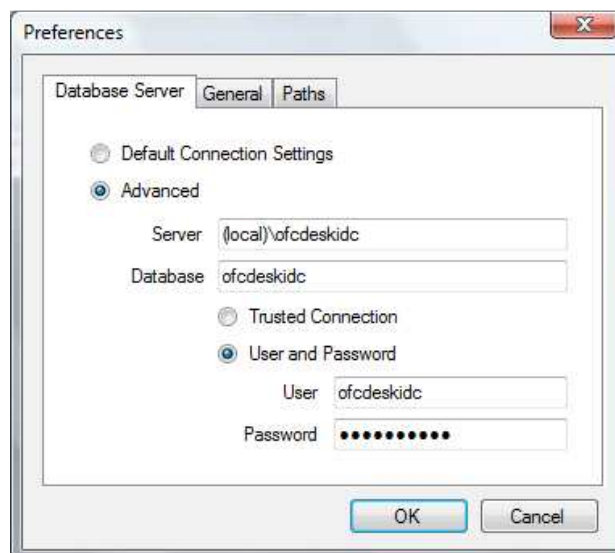
3- Set up Content Creator:

Install Content Creator on a machine (any machine) and then open the application.

Content Creator will try to find database on the same machine where it was installed by default, but it is very likely that Content Creator cannot find database, unless Content Creator had been installed on the same machine where OFCDesk IDC Server was installed.

Follow these steps:

- Click on the **Cancel** button on displayed error message;
- Content Creator will open directly in database settings screen;
- Select **"Advanced"** option;
- On **"Server"** field, type the machine name where OFCDesk IDC Server was installed, followed by "\\OFCDeskIDC". E.g.: MACHINE01\OFCDeskIDC;
- Type **"OFCDeskIDC"** on **"Database"** field;
- Type **"ofcdeskidc"** on **"User"** field;
- Type **"ofcdeskidc"** on **"Password"** field;
- Click **"Ok"**;



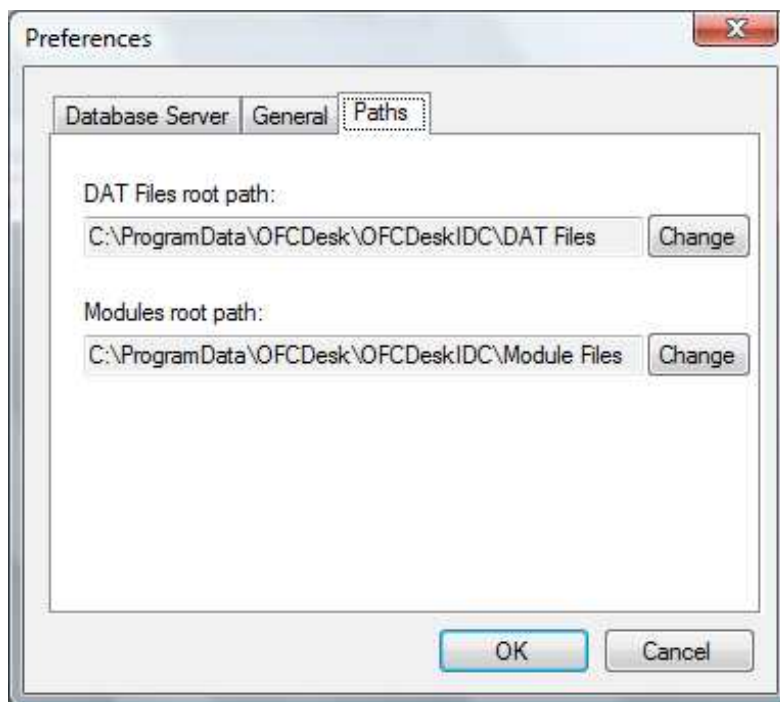
An error message will be displayed if Content Creator cannot connect to OFCDesk IDC Serve. Review values and try again.

Note: If database has been attached to an existing Microsoft SQL Server installation, please ask for required connection information.

After set up database, you must inform shared folder on network through "**Paths**" tab.

Follow these steps:

- Open Content Creator;
- Click on the "**Tools**" Menu, "**Preferences**";
- Click on the "**Paths**" tab;
- On "**DAT Files root path**" field, click on the "**Change**" button and select "**DAT Files**" folder that was shared on step 2;
- On the "**Module root path**" field, click on the "**Change**" button and select "**Module Files**" folder that was shared on step 2;
- Click "**Ok**";



Repeat this process for all Content Creator licenses you might install.

4- Set up OFCDesk IDC:

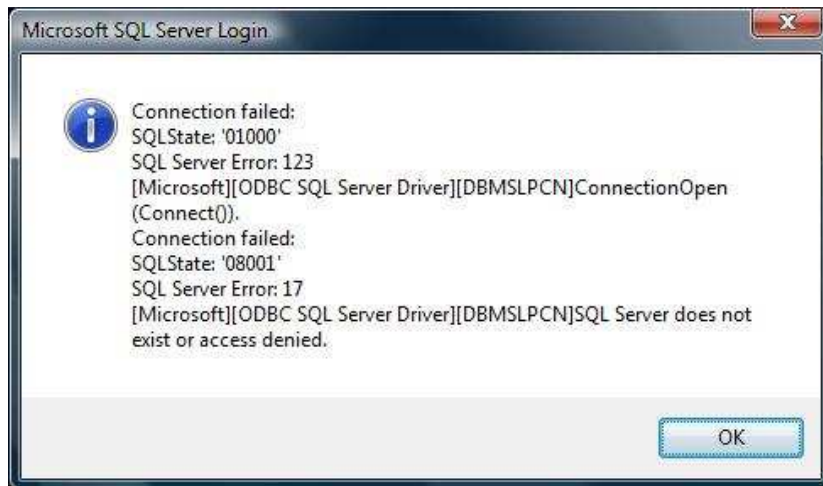
After install OFCDesk IDC, open the application.

Attention! If you are using Windows Vista, right-click on OFCDesk IDC shortcut and select **“Run as Administrator”**;

OFCDesk IDC will try to find database on the same machine where it was installed by default, but it is very likely that OFCDesk IDC cannot find database, unless OFCDesk IDC had been installed on the same machine where OFCDesk IDC Server was installed.

When it happens, two error messages will be displayed:

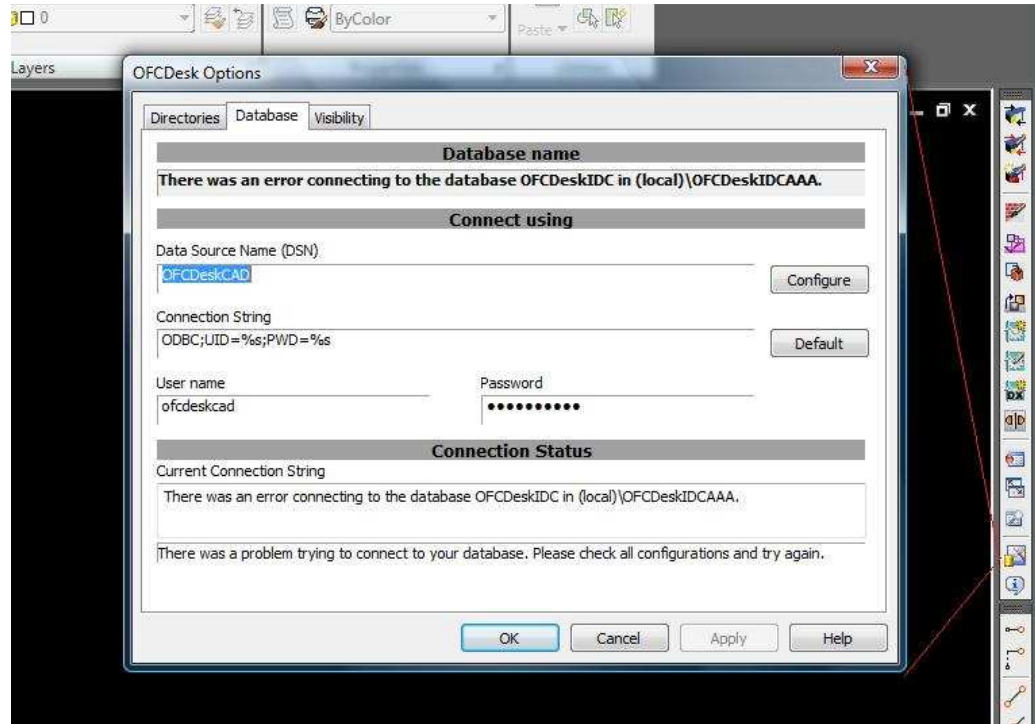
First message:



Second message:



Set up Screen:



Follow these steps:

- Click "**Ok**" on the first displayed message;
- Click "**Cancel**" on the second displayed message;
- Within OFCDesk IDC, click on the preferences icon (or type "**PREF**" command);
- Click on the "**Database**" tab. The error messages displayed at first will be redisplayed. Click "**Ok**" on the first message and "**Cancel**" on the second message;
- Click on the "**Configure**" button and a setup screen will be displayed;
- On "**Server**" field, type the machine name where OFCDesk IDC Server was installed, followed by "\\OFCDeskIDC". E.g.: MACHINE01\OFCDeskIDC;
- Click "**Next**";
- Type "**ofcdeskidc**" on "**Login ID**" field;
- Type "**ofcdeskidc**" on "**Password**" field;
- Click "**Next**";
- Select "**OFCDeskIDC**" on "**Change default database to**" field;
- Click "**Finish**";

An error message will be displayed if OFCDesk IDC cannot connect to OFCDesk IDC Server. Review values and try again.

Note: If database has been attached to an existing Microsoft SQL Server, please ask for required connection information.

Repeat this process for each OFCDesk IDC license you might install.

Using OFCDesk IDC on network

Now that all systems are already installed and set up, every installed or changed library will be automatically available to all OFCDesk IDC licenses that are connected to same OFCDesk IDC Server. This is also applicable to library updates.

Updating libraries on one OFCDesk IDC license, the other OFCDesk IDC licenses will be also updated.

This rule is not applicable when there is an OFCDesk IDC or Content Creator updates.

When there is an upgrade for those applications, user is notified at the same time as applications are opened. Just follow the onscreen steps to complete the application updating.